

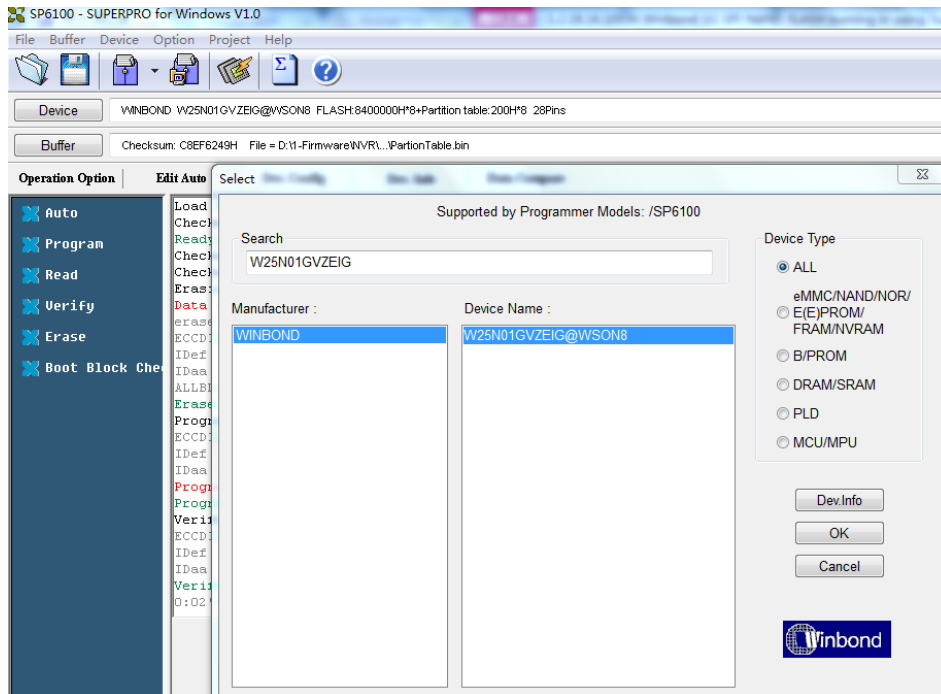
1.2.18.16.10036 (W25N01GVZEIGTR)

burning by SuperPro 6100

Modify date: 2018.06.28

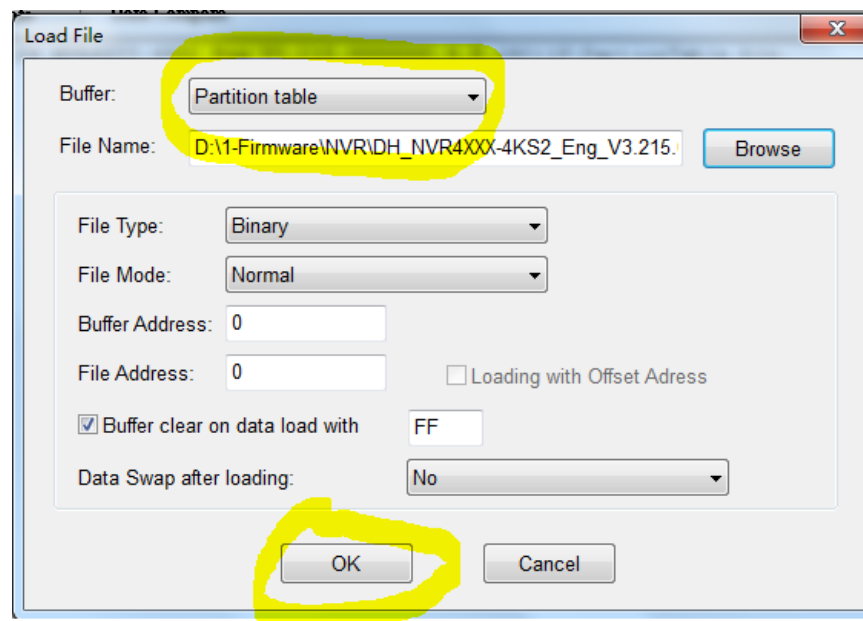
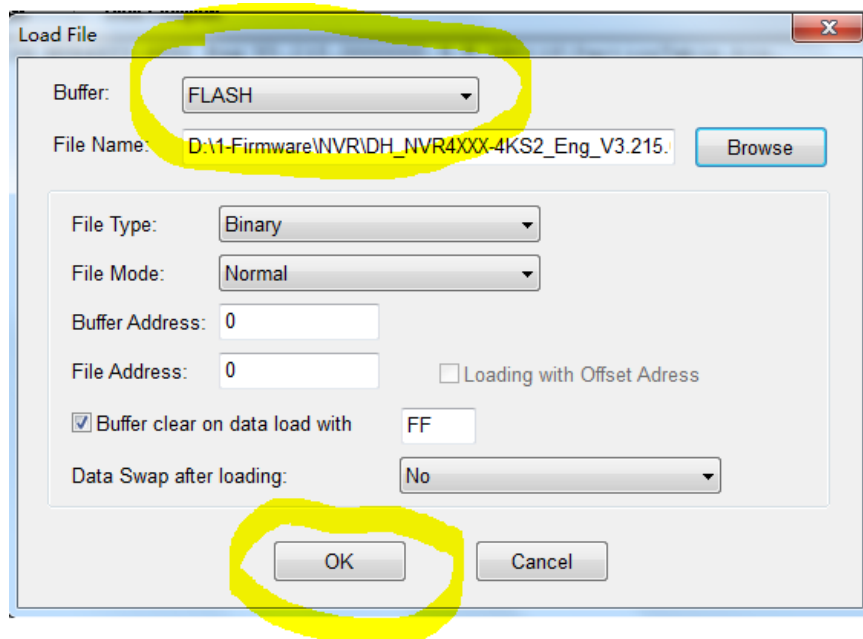
Steps as below:

1. Device select: W25N01GVZEIG

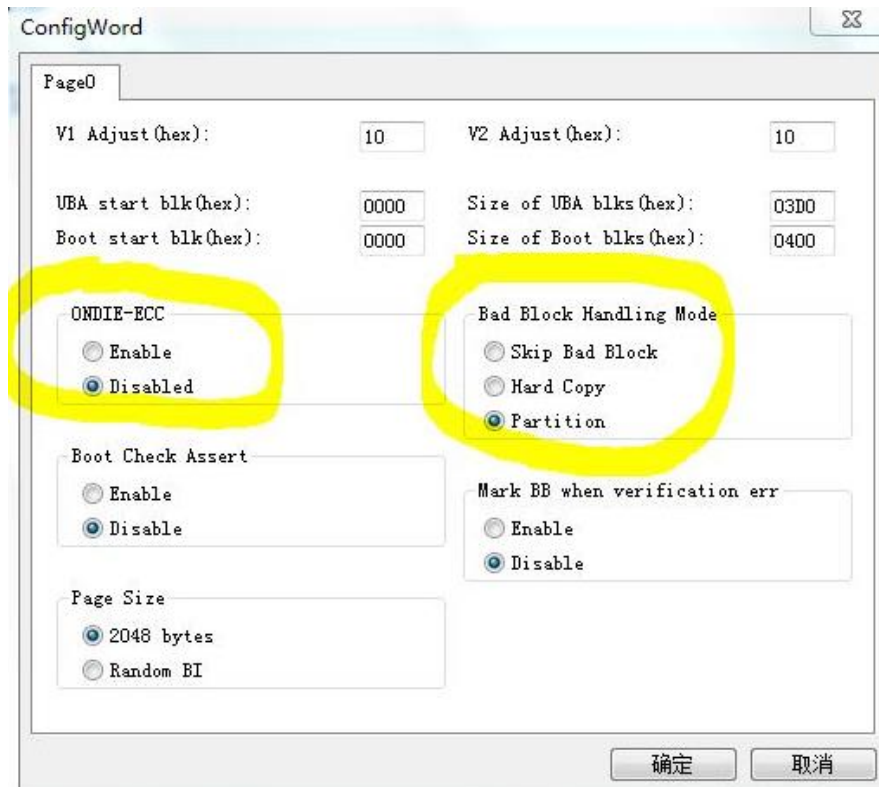


2. Load file

Firstly load **Flash.bin**, then load **Partition.bin**.



3. Dev. Config setting (**should be the same as pictures below**)



4. Start to program process.