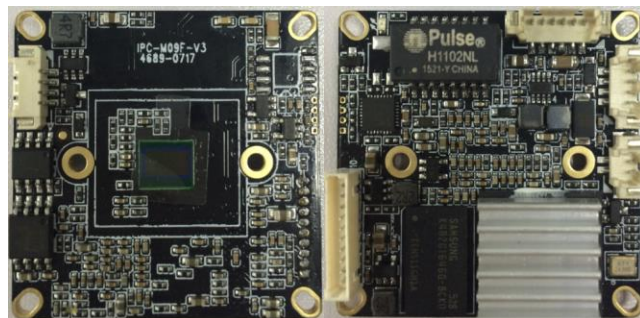
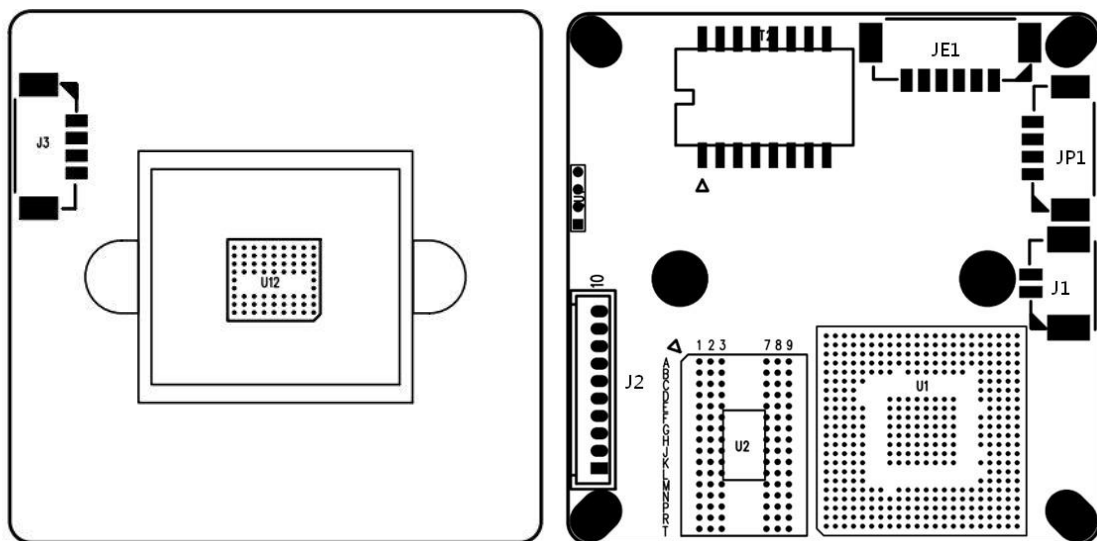


4mp CMOS sensor,38*38mm signal layer;Multifunctional ports:Audio input/output,Alarm input/output,USB.Support ir cut to be day and night; Suitable for multifunctional dome,bullet,box cameras.H.264/H.265video coding,support double stream,Low illumination at 0.05LUX at F1.2 when color and 0.01LUX at F1.2 when B&W.Best resolution is 2592*1520,support the latest onvif protocol.Can be used for most management systems at China and abroad.



Model NO.		IPC-M09F-V3 4689-0717（4.0MP）	
Hardware			
Chipest		Hi3516D；1/3 “ OV4689 CMOS sensor	
Illumination		Color:0.05Lux@F1.2,B&W0.01 Lux@F1.2;	
S/N		≥50dB(AGC OFF)	
Port			
Audio/talkback		1CH Audio MIC input/linear input	
Audio output		Support 1CH Audio output	
IOport		1CH reset(optional：reset、alarm input、alarm output)	
USBport		1pcs USB port,Support maximum 32G SD card,	
Video coding			
Coding form		H264，Baseline/Main Profile/High Profile Coding；H.265 Main Profile Coding	
		MJPEG Coding	
Resolution	M-Stream	2592*1520，1-15ftp/sec	
		2048*1520，1-25(30) ftp/sec	
		1920*1080，1-25(30) ftp/sec	
	S-stream	704*576，1-25(30) ftp/sec640*480，1-25(30) ftp/sec	
		640*352，1-25(30) ftp/sec320*240，1-25(30) ftp/sec	
Video		32Kbps-16Mbps continuous adjustable，support CBR/VBR	
Subtitle overlay		Support channel name、Date、Code stream information overlay,Overlay place adjustable	
Data transmission & storage			
Data storage		Video,picture,file	
Storage way		Manual、auto(cycle、fixed time、alarm switch、motion detection)	
Alarm data		FTP、E-mail/Browser、management software	
Protocol		TCP/IP、UDP、RTP、RTSP、RTCP、HTTP、DNS、DDNS、DHCP、FTP、NTP、PPPOE、SMTP、UPNP	
Wireless Protocol		802.11b/g/n、support WEP、WPA、WPA2 encryption protocol	
ONVIF		ONVIF	
Browser		Support IE6.0 and above, Device embedded Web Server,Support Max 10 user interview	
Mobile App		Support iPhone、iPad、Android	
General Data			
Power		DC12V/POE	
Consumption		3W(MAX)	
IR CUT		Hole distance 22mm	
Size		38*38*10mm	
Weight		0.1KG	



J4 Power Port

1	DC12V
2	CMT_R tap
3	CMT_T tap
4	GND

J6 Network Port

1	RJ45_1
2	RJ45_2
3	RJ45_3
4	RJ45_6
5	Network connection indicator light (green)
6	Network status indicator (yellow)

J1 IR-cut port

1	IR-CUT control signal 5V
2	IR-CUT control signal 5V

J3 IR LED port

1	IR LED 12V Power output
2	GND
3	IR feedback signal input (threshold 0.8V-12V)
4	Constant current IC PWM enable control

J2 function port

1	Audio input
2	Audio ground
3	Audio output
4	reset
5	GND
6	USB_DP
7	USB_DM
8	5V power output
9	NULL
10	NULL